



**MENLO
COMMONS**
2140 Santa Cruz Avenue
Menlo Park, CA 94025

**Information Directory
2023**

ABOUT THE COVER...

Visions for the future of Menlo Commons interior garden

A group met between June 8 and September 13 to discuss ***Drought Resistance Landscaping and water-wise management.***

Much information was uncovered and presented in seven meetings to the around 20 residents who attended.

Vigorous discussion with numerous suggestions followed.

We have around 170 people living at Menlo Commons, so perhaps 150 did not partake of the water use data and slide shows focused on landscaping now archived at

<http://www.forssell.com/menlo/Drought/Drought.html>

Or: go to www.forssell.com
and click on

- For Menlo Commons residents / then
Menlo Commons Projects / then
Landscaping / and there you are 😊

This 2023 Information Directory cover focuses on just one of several conceptual illustrations designed to share a vision of a drought resistant Menlo Commons garden that provides more and different options for residents than the current arrangement.

The series of slide shows archived under the last meetings show what residents said they like, potential to enhance privacy for several units by sculpting our garden, ideas for the creation of social spaces for individual enjoyment, gatherings, parties, and recreation.

Please check out the archive!

This Information Directory up to date: Jan 12, 2023

Independently produced & sponsored by Dag Forssell,
a volunteer service for the Menlo Commons community.

No HOA funds were used in creating,
printing or distributing this directory

Menlo Commons Information Directory 2023

WHAT TO DO WHEN...	ii
In an emergency or you have a concern	
BOARD, COMMITTEES, TELEPHONE...	iii
What you need to know	
OUR MANAGEMENT COMPANY...	iv
What you need to know	
GOOD TO KNOW...ORGANIZATION	vi
Menlo Commons volunteers, requirements and more	
COMMUNITY LIVING...	viii
Living together in harmony	
GOOD TO KNOW... BUILDINGS...	x
Caring for our common property	
WATER AND GAS... BUILDINGS A-E	xii
Where to shut off gas and water in an emergency	
WATER... IRRIGATION...	xvii
Where to shut off water if sprinklers break	
ABOUT THE PHONE BOOK...	xviii
PHONE BOOK BY UNIT...	1
FIND YOUR FRIEND...	16

WHAT TO DO WHEN....

In case of a health or medical emergency

CALL 911, stay on the telephone line and give clear, accurate information. State your name, address, building, unit, and your telephone number. Also your gate code if appropriate.

In case of fire

If the fire alarm sounds, feel the door before opening. If it is hot, use another way out. See p. x and tinyurl.com/FireEducation

Please trigger the alarm in your hallway, then CALL 911

Alarms are located next to each staircase door on every floor. These alarms warn your neighbors, not the fire department, so it is important that you call 911.

In case of emergency, such as flooding... ¹

...or other imminent property damage or safety endangerment, call The Manor emergency phone at 650 587-3505.

In case... (not a complete list, but you get the idea ☺)

You don't want to get yourself locked out	See page xi
A drain is clogged	Call MCS *
The pool needs attention	Call MCS *
A sprinkler problem ²	Call MCS *
Building needs repair	Call MCS *
Carpet needs cleaning	Call MCS *
Mechanical noise	Call MCS *
A landscaping problem	Call MCS *

* **MCS** = The Manor Client Services: 650 637-1616 ext. 1
Email: cs@manorinc.com, Emergency: 650 587-3505.
The Manor has a staff of 3 on call Mon-Fri, 9:00–5:00
They will contact Val, our on-site manager.

For more on the Manor, see page iv.

- 1 If flooding in building, see pages xii – xvi.
- 2 If sprinklers are gushing, see page xvii.

BOARD, COMMITTEES, TELEPHONE

2023 Menlo Commons Board of Directors

President	Ann Mueller	For more on our Board, see p. v.
VP, CFO	Linda Meier	
Secretary	Josephine Dorval	
Director	Shirley Clayton	
Director	Vacant	

Committees

Architecture	Ann Mueller	For more on Committees, see p. vi.
Facilities	Dag Forssell	
Finance	Linda Meier	
Landscaping	John Loughlin	
Orientations	Josephine Dorval	
Social	Lakshmi Narayani, Daniela Turner	
Commons Room Rental	Carol Clarke	

Important Phone Numbers

For all emergencies	911
Menlo Commons on-site manager (Val)	650 854-2100
The Manor Client Services	650 637-1616 ext. 1
Non-emergency Fire Department	650 363-4961
Non-emergency Police Department	650 330-6300
Kwik Key (authorized locksmith)	650 965-2997
AT&T	866 299-6824

Telephone – Television – Internet

For telephone, TV or Internet service issues or billing questions call AT&T at 866 299-6824. Say you have a Connected Community Contract. Have your AT&T acct / phone number handy.

Note: Without extra services, your AT&T bill should be zero. AT&T bills for misc. taxes anyway. When you call*, a rep will apologize and zero your account. Repeat every few months. ☹

* I (Dag) don't pay or call until I receive a suspension notice, which is every time my bill gets into the \$30s.

OUR MANAGEMENT COMPANY

Menlo Commons is professionally managed by:

The Manor Association

1820 Gateway Drive, Suite 100 San Mateo, CA 94404

Our Community Association Manager is:

Nichole Dillon-Lee: Phone: 650-781-9138

Email address: ndillonlee@manorinc.com

The Manor Association Client Services can be reached via:

Phone: 650 637-1616 ext. 1 Fax: 650 637-1670

Email cs@manorinc.com www.manorinc.com

The Manor Association Client Services ...

...is open Monday thru Friday, 9:00 am–5:00 pm.

All maintenance issues or requests, inquiries, questions or concerns regarding the facilities or operation of Menlo Commons should be directed to Manor Client Services. (Not to Val Smith or HOA Board members.)

When calling please provide your name, building and unit, and your telephone number. Please clearly state the purpose of your call. Client Services will log your call and direct it to the appropriate person for resolution.

Weekend and After-Hours Requests

For Maintenance Services ***IF IT IS AN EMERGENCY***, defined as imminent property damage or safety endangerment, please call The Manor at 650 587-3505 and speak to the on-call Manor representative or leave a message with phone number. Your call will be returned ASAP.

IF IT IS NOT AN EMERGENCY, call Manor: 650 637-1616 ext. 1 and at the voicemail prompt please leave a detailed message with your name, building and unit number, that you are calling from Menlo Commons, and the service needed.

GOOD TO KNOW... ORGANIZATION...

Our Menlo Commons Board of Directors...

...are volunteers who serve our Association. By California civil code the Board of Directors has the fiduciary obligation to protect, maintain, and enhance the value of assets, and is responsible for management and operation of the association. The board has retained the services of our management company, the Manor, to handle day-to-day operations, and the Manor in turn, employs our on-site manager, Val Smith. When you have a concern, please direct your communications as shown on page i. Do not call your volunteer board member friends unless a truly urgent issue demands it.

Association CCRs and Bylaws...

...are our formal governing documents.
A copy is located in the Commons Room.

Menlo Commons Operating Rules ...

...is a 29-page reference drawn from several documents.
A copy is located in the Commons Room. A PDF version is available on request.

Insurance and liability...

...Buildings are owned and insured by the Association.
...Unit owners are **required** to carry an HO-6 policy for content and liability. Tenants are **required** to carry an HO-4 policy. Failure to carry such insurance puts owners and renters at **extreme financial risk**.

If you consider any remodeling changes to your unit...

...such as air conditioning, new bath, new windows etc., see the Menlo Commons Operating Rules. You will have to prepare a remodel request and submit it to the Board and the City. Questions should be directed to the Architectural Committee. For original unit blueprint drawings, contact Dag Forssell.

GOOD TO KNOW... ORGANIZATION...**Committees...****Architecture / Remodel:**

Homeowners who want to make upgrades or other changes to their units must confer with the Architecture / Remodel committee to determine what can be done with and without a permit from the City of Menlo Park.

Facilities:

The five Menlo Commons buildings are over 40 years old and require understanding and care of common utilities, ventilation systems, as well as general maintenance and upkeep. This committee works to identify issues and resolve them.

Finance:

The Finance Committee works with the Board to continually review the financial condition of the Association.

Landscaping:

The committee will oversee maintenance and improvement to the appearance of the association's common area landscaping (perimeter, lawn, flower gardens, gazebo, walkways, and planters) thru oversight and coordination of the landscaping vendors.

Orientations:

The committee will welcome new residents to Menlo Commons and provide them with pertinent information to enjoy a pleasant and successful move to our community.

Social:

Holiday and other social events are planned by this committee. To use common facilities, residents turn to the social committee for reservations.

COMMUNITY LIVING...

Living together in harmony...

...means considering the impact of your actions on your neighbors, and it means paying attention to things, odors and sounds.

Composting:

ALL residents are strongly encouraged to compost. Please collect food scraps, pizza boxes, used paper plates, flowers, coffee grounds, and paper food containers and empty them in the green trash can in your trash bin room or the big green container right inside the Menlo Commons main driveway entry.

Recycling:

ALL residents are strongly urged to recycle various household waste. Glass, metal, paper, aluminum foil, clean cardboard, plastic jars, and bottles, can be recycled. Check for the recycle symbol if not sure. Styrofoam, bubble wrap and plastic bags cannot be recycled. Place recyclable materials in the large blue bins located in the garage.

Trash:

What cannot be composted or recycled (clothing, broken glass/china), can be placed in plastic bags, tied securely, and placed in the trash chute on each floor. Large items should be carried to the garage level trash room.

Pets:

Are welcome companions, but should neither be seen nor heard in ways that disturb your neighbors. Never bring pets into the Commons Room. Please walk your pets for toilet purposes outside of the fenced interior courtyard, and pick up droppings right away. Place waste in one of the two exterior pet waste collection baskets. Please—kitty litter must be carefully bagged and sealed before being placed in garbage chutes.

COMMUNITY LIVING...

Independent of the board, residents can and do organize activities such as:

Emergency preparedness, Movie nights, Mahjong, Bridge, Exercise, Swimming, Walking, Hiking, Shopping, Swapping books and equipment, Picnics in nearby parks, Communal dining (scheduled, spontaneous, indoors or out). Book clubs, Discussion groups, Lectures, Town Hall meetings, Computer support groups.

Communications...

The Board communicates:

- 1 Notices of HOA meetings are posted on bulletin boards located near mail boxes in each building.
- 2 Notices of HOA meetings and Board meeting minutes are posted and when possible emailed to residents using email addresses shown on pages 2 – 16.
- 3 Important materials (required documents) are sent via the US Mail to owners of record.

Residents communicate between themselves:

- 1 By telephone.
- 2 By email and personal notes.
- 3 By posting on general purpose bulletin boards located in the elevator lobby on the garage level.

Plumbing (next page) To detect flooding, consider a 3-pack Instapark Water Leakage Detection Alarm.

Under kitchen sink,
under vanity, corner
of bathroom floor.



GOOD TO KNOW...BUILDINGS...

Plumbing

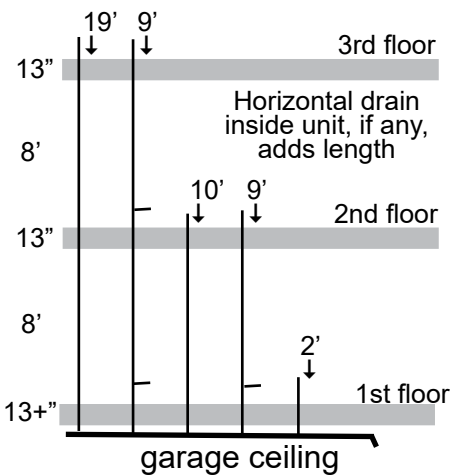
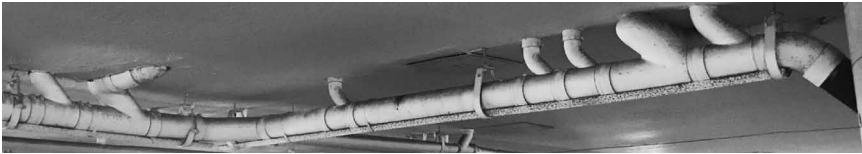
It is IMPORTANT that we all **avoid** clogging drains by flushing excess toilet paper, (single thickness recommended) hygiene products and/or wipes down the toilet drains. **Wipes may claim you can flush them, but please don't.** Clogs in the garage ceiling sewer pipes cause flooding—water coming up into toilets and sinks.

Kitchen drains can clog from fat and foods. Never pour grease down the drain. A sieve in your sink can catch tea leaves and anything else so you can dump them in compost.

When it is determined... that a certain unit caused a blockage, the owner may be held responsible for all repair costs.

Toilet, bathroom, kitchen drains...

...all empty into the pipes suspended in our garage ceilings.



Some drains on the 3rd floor drain 19 ft straight down.

Some drains on the 3rd floor drain 9 ft straight down, then join 2nd floor drains.

Most drains on the second floor join drains on the first floor 9 ft down.

Most toilets drain straight to the garage level.

Of course, all drains are vented to the roof.

If you have a clogged drain... see page ii

GOOD TO KNOW...BUILDINGS...

Third floor deck drains...

... must be kept clear of debris, such as leaves, to allow flow and prevent flooding. This is the owner's responsibility.

Please conserve water...

... we use water for irrigation, our pool, and personal use, and it adds up to substantial expense. Please conserve!

Be prepared for and notified of emergencies...

... Study the National Fire Protection Association flyer here: tinyurl.com/FireEducation Specific to apartment buildings!

The San Mateo County alert system, **SMC ALERT** is an alert notification system used to immediately contact you during urgent or emergency situations. To sign up: hsd.smcsheriff.com/smcalert

Earthquake preparedness information is available at California Earthquake Authority, www.earthquakeauthority.com

In case of a power outage...

... Emergency lights in hallways and stairs turn on; they have a battery life of approximately 4 hours.

... Elevators descend and doors open.

To use the elevator emergency phone, just open door and press button. Staff stands by to take your call 24/7.

... Garage gates open and stay open for the duration of the power outage

Commons room...

... is a major feature of Menlo Commons. Reservations are available for private use. For much specific information, see the Menlo Commons Operating Rules and more located in this room.

Commons room kitchen...

... is well equipped to support substantial parties in the Commons Room. Reservations are required for private use.

Gym in bldg E...

... hours are from 7:00 am to 10:00 pm, seven days a week. See MC Operating Rules located in the Commons Room.

Community pool...

... is available to residents and adult guests from 6 am to 10 pm. Please observe posted rules.

Building and unit drawings...

... scanned from original building blueprints can be made available on request. Some are available already; some require processing. Contact Dag Forssell.

DON'T GET YOURSELF LOCKED OUT

The Manor Association, The Menlo Commons Association's Board, and the Facilities Manager (Val Smith) ...

... Do Not Provide Lockout Services

We strongly urge all residents to establish access to a spare key to gain entry to their unit in the event a lock-out occurs.

If a lock-out occurs during regular business hours, Kwik Key (650) 965-2997 may be able to assist at a cost to you.

To purchase that spare key visit Kwik Key at 1949 West El Camino Real, Mountain View. CA 94040, kwikkeylock.com, 8:30 am–5:00 pm Mon – Fri. Phone: (650) 965-2997

... Consider ...

Purchase extra keys. Be creative!
Keep an extra key in a lock box?

Shown: Kidde pushbutton keysafe
Kingsley Realtor's Lockbox

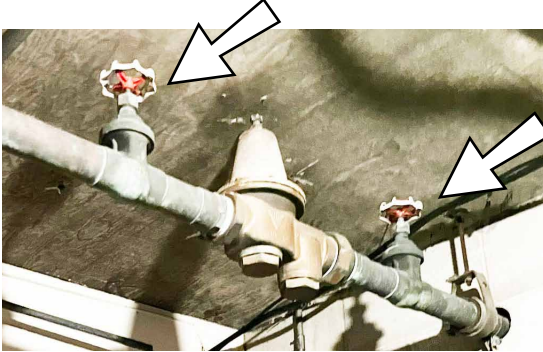


WATER AND GAS SHUTOFF... BUILDING A....

In case of flooding in a unit, shut off water to the building.

Enter the Water Heater room.

Building A resident key required.



Use either valve to shut off water.
Unit between them is a pressure reduction valve.
Location: ceiling close to jacuzzi and pool.

In case of an earthquake, shut off gas at the meter.



View standing in front of main gate.
Location: Corner outside / below unit A-101
Wrench at gas meter.



WATER AND GAS SHUTOFF... BUILDING B....

In case of flooding in a unit, shut off water to the building.

Enter the resident storage locker room

Building B resident key required



Use either valve to shut off water.

Unit between them is a pressure reduction valve.
Location: ceiling above locker.

Tip: Keep ladder handy, you will need to reach up.

In case of an earthquake, shut off gas at the meter.



View looking down toward B entrance.
Corner by unit B-106
Wrench at gas meter.



WATER AND GAS SHUTOFF... BUILDING C...

In case of flooding in a unit, shut off water to the building.



Enter the Water Heater room.

Building C resident key required, or not.

Use either valve to shut off water.

Unit between them is a pressure reduction valve. Location: Straight ahead in room.



In case of an earthquake, shut off gas at the meter.



Under unit C-110 balcony Behind fence. Wrench at gas meter.



WATER AND GAS SHUTOFF... BUILDING D...

In case of flooding in a unit, shut off water to the building.



Enter the storage room.
Building D resident key
required, or not.

Use either valve to shut off water.
Unit between them is a pressure
reduction valve.
Straight ahead, inside outer wall.



In case of an earthquake, shut off gas at the meter.



At building corner under
unit D-105 flower box
Wrench at gas meter.



WATER AND GAS SHUTOFF... BUILDING E....

In case of flooding in a unit, shut off water to the building.



In front of garage space 208

Use either valve to shut off water.
Unit between them is a pressure reduction valve.



In case of an earthquake, shut off gas at the meter.



Bldg E
entry



To the right of Bldg E entrance
in corner. Wrench at gas meter.

WATER SHUTOFF. ALL IRRIGATION....

In case of flooding by sprinklers,
shut off water to all irrigation at Menlo Commons.



Location: View from MC entry, below Bldg A and tree.



When horizontal, behind water pipe, blue handles are barely visible. Valves are open. Not shown in this picture.

To close water to irrigation, reach behind pipes and turn at least one blue valve handle upright.

Device between shutoff valves is a back flow valve.

Left handle: incoming Right handle: out.

It is enough to turn off either valve.

ABOUT THE PHONE BOOK ...

Which building? Which floor?		
Unit	LAST, First names email address second email address	Phone numbers 650 area code is standard, not shown.

Calling 650 area code phone numbers in most of San Mateo and Santa Clara Counties will soon require ten digit dialing as the FCC implements 988 as a suicide prevention hotline.

Name	Find Your Friend	
First, Last	E-mail	Unit

This section is designed so you can find a resident by his or her first name. Given the Unit, you can look up phone number and more in the first section.

Keeping this directory up-to-date

Residents, please review your listing with care. Do you spot typos or want change phone numbers or your email address? Want to spell out what is a home or cell phone? Want to add a phone number or email address to the person looking after you or your unit? Want to say iPhone instead of Cell, so that friends will know they can call using Apple FaceTime?

I update this directory when I receive orientation data about new owners or renters. I remove residents when they have moved out.

Val will provide extra copies of this directory on request.

Dag Forssell, Publisher

Building A: First Floor		
101	GOLDBERG, Wendy & WHITE, Jerome (Jerry) wendyfay@stanford.edu	Cell 400-6437
102	JERIS, Darlene & LOUGHLIN, John Darlene.Jeris@gmail.com JohnPLoughlin79@gmail.com	Darlene Cell 914 419-4595 John Cell 646 942-8279
103	DORVAL, Josephine jsdorval@yahoo.com	Home 384-6191 Josephine Cell 619-4024
104	Resident	
105	O'NEIL, Barbara bravobisc@aol.com	Home 384-6664 Barbara Cell 823-8582
106	BLANCHARD, john & NARAYANI, Lakshmi blanchardjohn@mac.com lakshmi_narayani@sbcglobal.net	John Cell 815-9059 Lakshmi Cell 815-9060

Building A: Second Floor		
201 018	KLANG, Joyce jdklang1@gmail.com	Home 656-8300
202	TYSON, Carol ctyson28@aol.com	Carol Cell 310 497-0664
203	SUBRAMANIAN, Kalyan & VELLAIKAL, Asha kalyan.sub@gmail.com vellaikal@gmail.com	Kalyan Cell 283-0145 Asha Cell 283-0304
204	GAUGER, Barbara malauger2@gmail.com	Home 384-6059
205	ESMAILZADEH, Brigitte	Home 384-6232
206	KAU, Michael Ying-Mao & Anna H ahuangkau@gmail.com Daughter Kathy KathyKau@gmail.com	Home 384-6468 Kathy Cell 704-4846
207	CANDLER, Jim Jim.Candler@yahoo.com	Home 384-6262
208	MUELLER, Ann ann.mueller@sbcglobal.net	Ann Cell 415 519-5284
209	BOULAS, Lucy lucyhelmy@yahoo.com	Lucy Cell 774 408-0252
210	KAZ, Saeid & Azar kaz@yahoo.com azar_kaz@yahoo.com	Saeid Cell 408 398-2135

Building A: Third Floor		
301	HARBATKIN, Judy jharbatkin@gmail.com	Home 233-9188 Judy Cell 201 650-7600
302	FERRARI, Diana dianarferrari@gmail.com	Diana Cell 207-4220
303	LUDER, Stephen C steveluder@aol.com	Home 796-8922
304	SLEIMAN, Issa jeddosleiman@gmail.com	Issa Cell 415 505-0599
305	McHUGH, Suzanne Adams suzy94062a@aol.com	Home 384-6964 Suzanne Cell 224-0107
306	MERRIMAN, Migdalia migdalia.merriman@gmail.com	Migdalia Cell 860 614-0917

Building B: First Floor		
101	PERSHING, Gayle gaylepershing@gmail.com	Home 384-6650
102	RICHARD, Rosemary Rosemaryarichard@gmail.com	Rosemary Cell 832-1870
103	BHUMRALKAR, Vandana vandana.bhumralkar@gmail.com	Home 234-1206
104	SCHROEDER, John & Margaret jrschroeder@yahoo.com	Home 234-8443 Cell 209 628-8201
105	RINGERTZ, Hans & Britt-Marie ringertz@stanford.edu bmringertz@hotmail.com	Home 283-2125
106	HEIDMANN, Jürgen juergen@me.com	Jürgen Cell 408 218-4828
107	CUTLER, Sally	Home 561-0013
108	KIRILCUK, Jana jana.kirilcuk@att.net	Home 384-6208 Jana Cell 216 258-8893
109	GINSBERG, Robin info@robinmft.com	Home 384-6006

Building B: Second Floor		
201	SCHULTE, Lilly & Bobby askmisslilly@gmail.com	Home 325-8760 Bobby Cell 207-6315
202	SOEHRENS, Donna soehrendj@yahoo.com	Home 207-5510
203	WANG, Chongming & WEN, Ping mingw820@gmail.com	Home 384-6724 Cell 408 802-6608
204	ASTRUE, Elaine & SOKOLSKY, Danny easttrue@gmail.com danny.sokolsky@gmail.com	Elaine Cell 215-8490 Danny Cell 919 3738
205	MELNICK, Gary grymelnick@yahoo.com	Home 507-4720
206	GONZALVEZ, Jesus & SANDOVAL, Carmen candj1972@gmail.com	Home 384-6811 Cermen Cell 818 515-7925 Jesus Cell 626 460-9079
207	VAHDATPOUR, Mark mlandmark2010@gmail.com	771-4574
208	WEST, Alayne alayne2327@yahoo.com	Home 854-6689 Alayne Cell 291-2005
209	VAHDATPOUR, Tahereh tatavahdat2016@gmail.com	208-1761
210	MURTO, Eve evemurto@gmail.com	Home 384-6292 Eve Cell 415 939-0303

Building B: Third Floor		
301	REIMER, Rocio & Jan freyrerocio@gmail.com reimer-ju@sbcglobal.net	Home 494-0367 Rocio Cell 804-5803 Jan Cell 804-5369
302		
303	PIECYK, Waldemar & Krystyna themech48@aol.com krysiapiecyk@yahoo.com	Home 384-6665
304	LEONARD, Gwen gwenleonardmusic@gmail.com	Home 600-8871 Gwen Cell 503 550-6274
305	VAN SCHAACK, Carol cvanschaack@gmail.com	Carol Cell 408 529-1125
306	MACKENZIE, Bill maccipiter@aol.com	Home 323-2717

Building C: First Floor		
101	PENNING, Patricia patpen34@gmail.com	Home 233-0885
102	REIF, Debi reifdebi@gmail.com	Debi Cell 847-8786
103	CLAPP, Duane & Marina duaneclappjr@gmail.com marina.clapp@gmail.com	Home 854-2238 Marina Cell 380-0464
104	VARZA, Jamshid & BAHRAMI, Mitra jamshid@varza.com mitrabv@gmail.com	Jamshid Cell 855-9900 Mitra Cell 678-3549
105	HEWITT, Halle hallemaria48@gmail.com	Home 854-4607
106	LAWRENCE, Pope and Jane jlawrence@ucmerced.edu pope.lawrence@comcast.net	Jane Cell 209 658-4490 Pope Cell 209 626-9617
107	MOUSER, Nancy E & Michael nancymouser7@gmail.com	Home 233-9155 Nancy Cell 465-6314 Michael Cell 213-2908
108	BERG, Julia juliasberg@gmail.com	Julia Cell 805 598-7444
109	BURKE, Nadia & BAHADUR, Sheila	Home 561-9241
110	SHAMOTO, Arlene ashamoto@gmail.com	Home 387-8441

Building C: Second Floor		
201	PATTON, Michael & Carole mcpatco@me.com	Home 234-8295
202	ESTRADA, Martha estrada.tita34@gmail.com	Home 234-1109
203		
204	FORSSELL, Dag & Christine Dag: mc@forssell.com Christine@forssell.com	Home 407-5007
205	WILLIAMS, Renée travelrenwill@gmail.com	Home 384-6028 Renée Cell 415 359-5975
206	HEATON, Jean jenrheaton@aol.com	Home 854-4988 Jean Cell 279-6227
207	FANN, Nancy gb1508@gmail.com	Home 926-9415 Son James Cell 269-6148
208	PIRZADEH, Brian brian_pirzadeh@yahoo.com	Home 888-5675
209	WATT, Linda & Hing hingywatt@gmail.com lindacwatt8@gmail.com	Son Stanley (local) 978 884-6619 Linda Cell 978 884-1466
210	CHO, Ellen Haeyoung bestbeautyhy@gmail.com Son Christopher cho.chris.k@gmail.com	Ellen Cell 387-1516 Son Christopher Cell 796-8548

Building C: Third Floor		
301	JAKOPIN, Carolyn cjakopin7@gmail.com Son David jakopinda@aol.com	Home 384-6296 Carolyn Cell 520-4186 David Cell 533-4448
302	MEIER, Linda linda.meier@sbcglobal.net	Home 324-1143 Linda Cell 255-3921
303	ASHCRAFT, Linda & Michael mlashcraft@gmail.com	Landline 530 878-8736 Linda Cell 530 305-7371
304	TURNER, Daniela danielabturner@yahoo.com	Daniela Cell 307-3282
305	YUKAWA, Patti patti.yukawa@me.com	Patti Cell 814-1565
306	FERRARI, Diana dianarferrari@gmail.com	Diana Cell 207-4220
307	BAXTER, Margaret	Home 854-6795

Building D: First Floor		
101	YELLIN, Steven yellin@slac.stanford.edu	Home 233-8904
102	CARDINAL, Lois ljc2140@gmail.com	Home 561-9389 Lois Cell 388-2303
103	MALETIS, Mary Liz maryliz500@gmail.com	Home 384-6485 Mary Liz Cell 465-4123
104	BACH, Abigail abach216@gmail.com	Abigail Cell 303 250-8093
105	YANG, Ying Q. & CHEN, Can y9ying2014@gmail.com taibaimountainer@gmail.com	Home 384-6051 Ying Cell 709-9578 Can Cell 575 650-7103
106	ARCHIBALD, Jacqueline	Home 854-4318
107	ROGERS, Ken & Ingrid hkrogers50@gmail.com ingridnrogers@gmail.com	Home 384-6470 Ingrid iPhone 275-4391
108	CSICSMAN-ETTER, Eva csicsman63@gmail.com	Home 926-9585 Eva Cell 353-0506

Building D: Second Floor

201	REGEL, James jimregel@earthlink.net	Cell 415 816-6625
202	ETEMAIO, N & HAZILOOS, S	Home 450-0931
203	HWANG, Myung (Mike) Kyu & Shin Ja (Susan) myunghwang@sbcglobal.net	Mike Cell 214 673-8404 Susan Cell 214 673-4325
204	SHRIDHAR, Baseti bkshridhar@msn.com	Home 656-8209 Baseti Cell 546-1180
205	ETIZ, Ergun ez.etiz@gmail.com	Ergun Cell 701-6711
206	MERMELSTEIN, Lew lewmer@gmail.com	Lew Cell 387-3581
207	RAZAVI, Alan alanrazavi@gmail.com	Alan Cell 245-9190
208	OMAN, Michael & Donna moman@bendbroadband.com omando65@hotmail.com	Home 384-6119 Mike Cell 253 651-8663 Donna Cell 253 376-5843

Building D: Third Floor		
301	GHARAVI, Parivash & RAZAVI, Vahid gharavi@yahoo.com vahid.razavi1@gmail.com	Home 384-6267 Vahid Cell 415 539-7880
302	SINHA, Vibhay & Manju vibhaysinha10@gmail.com manjusinha10@yahoo.com	Home 384-6147 Vibhay Cell 862-4286 Manju Cell 387-4084
303	BARTMESS, Bruce & Tina bbartmess@gmail.com ct.tina@icloud.com	Home 384-6973
304	MONJE, Susan susanmonje@sbcglobal.net	Home 384-6471 Susan Cell 925 963-8335
305	CLARKE, Carol clarke4444@msn.com	Home 384-6696 Carol Cell 670-2300

Building E: First Floor		
101	FRAKES, Janis (Jan) frakesje41@gmail.com	Home 384-6400
102	ZUK, Gaby gabriellezук.gz@gmail.com	Gaby Cell 415 879-6903
103	ODISHOO, Dan & Nanci djonko50@outlook.com	Home 384-6553 Dan Cell 380-1189
104	JOHNSON, Leonard F. & PARKS, Barbara ljbear44@gmail.com barbparks180@gmail.com	Leonard Cell 971 409-4293 Barbara Cell 971 409-4325
105	WAKEFIELD, Isanlid	Home 234-8364
106	GOLDSTEIN, Jordi djordijrn@sbcglobal.net	Home 384-6083
107	BAGHAEIRAD, Amir & JALALI, Parvin abaghaei@gmail.com parvinjalalinz@gmail.com	Amir Cell 206 890-1530 Parvin Cell 704-2375
108	KEER, Barbara barbkeer@gmail.com	Barbara Cell 847 533-7692
109	MURRAY, Roger W exmaca@gmail.com Granddaughter Shannon	Home 329-8832 Roger Cell 465-2901 Shannon Cell 666-7264
110	RAMANI, Usha & Panchapagesan usha.ramani@gmail.com panchapagesan.ramani@gmail.com	Home 384-6251 Usha Cell 510 318-1687 Panch Cell 416-4298

Building E: Second Floor		
201	LARSEN, Keith & Shaun T coachlarsen4@yahoo.com shaunl240@aol.com	Keith Cell 209 678-1447 Shaun Cell 209 678-1448
202	PECK, Anne peck@stanford.edu	Anne Cell 327-3549
203	ZEITLIN, Judi yurtlady@yahoo.com	Home 384-6608 Judi Cell 703-9413
204	CHUNG, Lilia lilianessa@earthlink.net Daughter Corinna bloviegr@gmail.com	Home 384-6276 Lilia Cell 407-8363 Corinna Cell 415-971-4212
205	MARSHALL, Susan susanwilliams3@sbcglobal.net	Home 838-0902
206	WALKER, Maria & Patrick mcwalkerca@gmail.com	Maria Cell 283-5940 Patrick Cell 444-9675
207	CARRILLO, Helen hmcarillo@gmail.com	Home 234-1099
208	WU, John & Karin Karin: kew900@aol.com John: opstat@aol.com	Home 407 566-3431 John Cell 218-1203 Karin Cell 269-4163
209	HENZINGER, Thomas thenzinger@gmail.com	
210	LAZARUS, Jeff & KAISER, Pam jefflazarusmd@gmail.com drpkaiser@gmail.com	Jeff Cell 216 789-5333 Pam Cell 888-7493

Building E: Third Floor		
301	SWEARINGEN, Krystyna & LANDO, Stephen krystynaswearingen@gmail.com overland1@sbcglobal.net	Home 233-0201 Krystyna cell 218-0052 Stephen cell 415 535-9941
302	DEUTSCH, Gayle gkdeutsch@gmail.com	Home 224-0485
303	PALMER, Marilyn imermer@aol.com	Home 926-9337 Marilyn Cell 799-2655
304	BROWN, Jagoda jagoda1011@yahoo.com Son Jacek jacekmbrown@gmail.com Daughter Cathy cdwulet@yahoo.com	Home 234-8450 Jagoda Cell 888-0964 Son Jacek Cell 503-701-7523 Daughter Cathy Cell 269-5598
305	CLAYTON, Shirley shirleyclayton2@gmail.com Daughter Serena serenaclayton@gmail.com	Shirley Cell 823-3011 Serena Cell 510-388-3178 Son Justin 285-7100
306	KINNEY, Charles & Marilyn kinneymj@sbcglobal.net	Home 854-5554 Marilyn Cell 222-0401
307	DERICKSON, Rossella rossella@pacbell.net	Home 384-6374 Rossella Cell 408 605-3021

Name First, Last	Find Your Friend E-mail	Unit
Abigail Bach	abach216@gmail.com	D-104
Alan Razavi	alanrazavi@gmail.com	D-207
Alayne West	alayne2327@yahoo.com	B-208
Amir Baghaeirad	abaghaei@gmail.com	E-107
Ann Mueller	ann.mueller@sbcglobal.net	A-208
Anna Huang Kau	ahuangkau@gmail.com	A-206
Anne Peck	peck@stanford.edu	E-202
Arlene Shamoto	ashamoto@gmail.com	C-110
Asha Vellaikal	vellaikal@gmail.com	A-203
Azar Kaz	azar_kaz@yahoo.com	A-210
Barbara Gauger	malauger2@gmail.com	A-204
Barbara Keer	barbkeer@gmail.com	E-108
Barbara O'Neil	bravobisc@aol.com	A-105
Barbara Parks	barbparks180@gmail.com	E-104
Baseti Shridhar	bkshridhar@msn.com	D-204
Bill Mackenzie	maccipiter@aol.com	B-306
Bobby Schulte	askmisslilly@gmail.com	B-201
Brian Pirzadeh	brian_pirzadeh@yahoo.com	C-208
Brigitte Esmailzadeh		A-205
Britt-Marie Ringertz	bmringertz@hotmail.com	B-105
Bruce Bartmess	bbartmess@gmail.com	D-303
Carmen Sandoval	candj1972@gmail.com	B-206
Carol Clarke	clarke4444@msn.com	D-305
Carol Tyson	ctyson28@aol.com	A-202
Carol Van Schaack	cvanschaack@gmail.com	B-305
Carole Patton	mcpatco@me.com	C-201
Carolyn Jakopin	cjakopin7@gmail.com	C-301
Charles Kinney	m-ckinney@sbcglobal.net	E-306
Chongming Wang	mingw820@gmail.com	B-203
Christine Forssell	christine@forssell.com	C-204
Christopher Cho	cho.chris.k@gmail.com	C-210
Dag Forssell	mc@forssell.com	C-204
Dan Odishoo	djonko50@outlook.com	E-103

Name First, Last	Find Your Friend E-mail	Unit
Daniela Turner	danielabturner@yahoo.com	C-304
Danny Sokolsky	danny.sokolsky@gmail.com	B-204
Darlene Jeris	darlene.Jeris@gmail.com	A-102
Debi Reif	reifdebi@gmail.com	C-102
Diana Ferrari	dianarferrari@gmail.com	A-302
Donna Oman	omando65@hotmail.com	D-208
Donna Soehrens	soehrensdj@yahoo.com	B-202
Duane Clapp	duaneclappjr@gmail.com	C-103
Elaine Astrue	eastrue@gmail.com	B-204
Ellen Haeyyoung Cho	bestbeautyhy@gmail.com	C-210
Ergun Etiz	ez.etiz@gmail.com	D-205
Eva Csicsman-Etter	csicsman63@gmail.com	D-108
Eve Murto	evemurto@gmail.com	B-210
Gaby Zuk	gabriellezuk.gz@gmail.com	E-102
Gary Melnick	grymelnick@yahoo.com	B-205
Gayle Deutsch	gkdeutsch@gmail.com	E-302
Gayle Pershing	gaylepershing@gmail.com	B-101
Gwen Leonard	gwenleonardmusic@gmail.com	B-304
Halle Hewitt	hallemaria48@gmail.com	C-105
Hans Ringertz	ringertz@stanford.edu	B-105
Helen Carrillo	hmcarillo@gmail.com	E-207
Hing Watt	hingywatt@gmail.com	C-209
Ingrid Rogers	ingridrogers@gmail.com	D-107
Isanlid Wakefield		E-105
Issa Sleiman	jeddosleiman@gmail.com	A-304
Jacqueline Archibald		D-106
Jagoda Brown	jagoda1011@yahoo.com	E-304
James Regel	jimregel@earthlink.net	D-201
Jamshid (Jim) Varza	jamshid@varza.com	C-104
Jan Reimer	reimer-ju@sbcglobal.net	B-301
Jana Kirilcuk	jana.kirilcuk@att.net	B-108
Jane Lawrence	jlawrence@ucmerced.edu	C-106

Name First, Last	Find Your Friend E-mail	Unit
Janis (Jan) Frakes	frakesje41@gmail.com	E-101
Jean Heaton	jenrheaton@aol.com	C-206
Jeff Lazarus	jefflazarusmd@gmail.com	E-210
Jerry White	wendyfay@stanford.edu	A-101
Jesus Gonzalvez	candj1972@gmail.com	B-206
Jim Candler	Jim.Candler@yahoo.com	A-207
John Blanchard	blanchardjohn@mac.com	A-106
John Loughlin	JohnPLoughlin79@gmail.com	A-102
John Schroeder	jrschroeder@yahoo.com	B-104
John Wu	opstat@aol.com	E-208
Jordi Goldstein	djordijrn@sbcglobal.net	E-106
Josephine Dorval	jsdorval@yahoo.com	A-103
Joyce Klang	jdklang1@gmail.com	A-201
Judi Zeitlin	yurlady@yahoo.com	E-203
Judy Harbatkin	jharbatkin@gmail.com	A-301
Julia Berg	juliasberg@gmail.com	C-108
Jürgen Heidmann	juergen@me.com	B-106
Kalyan Subramanian	kalyan.sub@gmail.com	A-203
Karin Wu	kew900@aol.com	E-208
Keith Larsen	coachlarsen4@yahoo.com	E-201
Ken Rogers	hkrogers50@gmail.com	D-107
Krystyna Piecyk	krysiapiecyk@yahoo.com	B-303
Krystyna Swearingen	krystynaswearingen@gmail.com	E-301
Lakshmi Narayani	lakshmi_narayani@sbcglobal.net	A-106
Leonard Johnson	ljbear44@gmail.com	E-104
Lew Mermelstein	lewmer@gmail.com	D-206
Lilia Chung	lilianessa@earthlink.net	E-204
Lilly Schulte	askmisslilly@gmail.com	B-201
Linda Ashcraft	mlashcraft@gmail.com	C-303
Linda Meier	linda.meier@sbcglobal.net	C-302
Linda Watt	lindacwatt8@gmail.com	C-209
Lois Cardinal	ljc2140@gmail.com	D-102

Name First, Last	Find Your Friend E-mail	Unit
Lucy Boulas	lucyhelmy@yahoo.com	A-209
Manju Sinha	manjusinha10@yahoo.com	D-302
Margaret Baxter		C-307
Margaret Schroeder	jrschroeder@yahoo.com	B-104
Maria Walker	mcwalkerca@gmail.com	E-206
Marilyn Kinney	kinneymj@sbcglobal.net	E-306
Marilyn Palmer	imermer@aol.com	E-303
Marina Clapp	marina.clapp@gmail.com	C-103
Mark Vahdatpour	mlandmark2010@gmail.com	B-207
Martha Estrada	estrada.tita34@gmail.com	C-202
Mary Liz Maletis	maryliz500@gmail.com	D-103
Michael Ashcraft	mlashcraft@gmail.com	C-303
Michael Mouser		C-107
Michael Oman	moman@bendbroadband.com	D-208
Michael Patton	mcpatco@me.com	C-201
Michael Ying-Mao Kau	ahuangkau@gmail.com	A-206
Migdalia Merriman	migdalia.merriman@gmail.com	A-306
Mike Kyu Hwang	myunghwang@sbcglobal.net	D-203
Mitra Bahrami	mitrabv@gmail.com	C-104
Myung Kyu Hwang	myunghwang@sbcglobal.net	D-203
N. Etemaio		D-202
Nadia Burke		C-109
Nanci Odishoo	djonko50@outlook.com	E-103
Nancy E Mouser	nancymouser7@gmail.com	C-107
Nancy Fann	gb1508@gmail.com	C-207
Pam Kaiser	drpkaiser@gmail.com	E-210
Panchapagesan Ramani	panchapagesan.ramani@gmail.com	E-110
Parivash Gharavi	gharavi@yahoo.com	D-301
Parvin Jalali	parvinjalalinz@gmail.com	E-107
Patricia Penning	patpen34@gmail.com	C-101
Patrick Walker	mcwalkerca@gmail.com	E-206
Patti Yukawa	patti.yukawa@me.com	C-305
Pope Lawrence	pope.lawrence@comcast.net	C-106

Name First, Last	Find Your Friend E-mail	Unit
Ping Wen	mingw820@gmail.com	B-203
Renée Williams	travelrenwill@gmail.com	C-205
Robin Ginsberg	rgrg33@sbcglobal.net	B-109
Rocio Reimer	freyrerocio@gmail.com	B-301
Roger W Murray	exmaca@gmail.com	E-109
Rosemary Richard	rosemaryarichard@gmail.com	B-102
Rossella Derickson	rossella@pacbell.net	E-307
S. Haziloos		D-202
Saeid Kaz	kaz@yahoo.com	A-210
Sally Cutler		B-107
Shaun T Larsen	shaun1240@aol.com	E-201
Sheila Bahadur		C-109
Shin Ja Hwang	myunghwang@sbcglobal.net	D-203
Shirley Clayton	shirleyclayton2@gmail.com	E-305
Stephen C Luder	stevluder@aol.com	A-303
Stephen Lando	overland1@sbcglobal.net	E-301
Steven Yellin	yellin@slac.stanford.edu	D-101
Susan Hwang	myunghwang@sbcglobal.net	D-203
Susan Marshall	susanwilliams3@sbcglobal.net	E-205
Susan Monje	susanmonje@sbcglobal.net	D-304
Suzanne Mchugh	suzy94062a@aol.com	A-305
Tahereh Vahdatpour	tatavahdat2016@gmail.com	B-209
Thomas Henzinger	thenzinger@gmail.com	E-209
Tina Bartmess	ct.tina@icloud.com	D-303
Usha Ramani	usha.ramani@gmail.com	E-110
Vahid Razavi	vahid.razavi1@gmail.com	D-301
Vandana Bhumralkar	vandana.bhumralkar@gmail.com	B-103
Vibhay Sinha	vibhaysinha10@gmail.com	D-302
Waldemar Pieczyk	themech48@aol.com	B-303
Wendy Goldberg	wendyfay@stanford.edu	A-101