

PROPOSED PLAN KEYNOTES

- 1 (N) PLUMBING ITEM
- 2 (N) FLOOR DRAIN
- 3 (N) GRAB BAR

MATCH SCALE TO PLAN

GENERAL NOTES

1. SEE DOOR SCHEDULE FOR TREATMENT OF DOORS TO REMAIN AND FOR ALL (N) DOORS
2. SEE WINDOW SCHEDULE FOR TREATMENT OF WINDOWS TO REMAIN AND FOR ALL (N) WINDOWS
3. SEE FINISH PLAN FOR ALL (N) FINISHES
4. SEE EQUIPMENT PLAN FOR LOCATIONS AND SPEC. OF (N) AND (E) EQUIPMENT
5. SEE FOR POWER AND DATA OUTLET LOCATIONS
6. SSD FOR FLOOR FRAMING PLAN AND LOCATIONS OF STRUCTURAL COLUMNS

DELETE ALL GENERAL NOTES NOT RELEVANT TO PROJECT

WALL LEGEND

	(E) WALL TO REMAIN
	(N) 8\"X16\" CMU WALL
	NEW 5 5/8\" METAL STUD WALLS 20 GAGE @ 16\" O.C. SEE INTERIOR ELEVATIONS FOR HEIGHT. 1/2\" PLYWOOD AND 7/8\" STUCCO OVER MTL LATHE ON EXTERIOR & 5/8\" GYP BD. ON INTERIOR SIDE
	NEW 3 5/8\" METAL STUD WALLS 20 GAGE @ 16\" O.C. SEE INTERIOR ELEVATIONS FOR HEIGHT. 5/8\" GYP BD. ON BOTH SIDES. USE GREEN BOARD IN WET AREAS AND WHERE TILE IS FINISH MATERIAL .
	NEW 1 1/2\" HAT CHANNEL FURRING W/ 5/8\" GYP BD ON FINISH SIDE
	NEW 3 5/8\" MTL STUD FURRING W/ 5/8\" GYP BD ON FINISH SIDE
	NEW STOREFRONT SYSTEM W/ 2.5\"X5\" MULLIONS
	NEW 3 5/8\" METAL STUD WALLS 20 GAGE @ 16\" O.C. 36\" HEIGHT. 5/8\" GYP BD. ON BOTH SIDES. USE GREEN BOARD IN WET AREAS AND WHERE TILE IS FINISH MATERIAL .

USER NOTE: USE (E) 3 5/8\" MTL STUD WALL FOR PONY WALL LEGEND

GENERAL NOTES:
1. THIS SHEET IS PART OF A SET & IS NOT TO BE USED ALONE.
2. THIS SHEET IS NOT FOR CONSTRUCTION UNTIL THE ARCHITECT'S STAMP & SIGNATURE ARE ON THIS SHEET.
3. THESE PLAN & PRINTS ARE OWNED BY THE ARCHITECT & ARE FOR USE ON THIS PROJECT ONLY. REPRODUCTION AND/OR DISTRIBUTION WITHOUT THE WRITTEN CONSENT OF THE ARCHITECT IS FORBIDDEN.

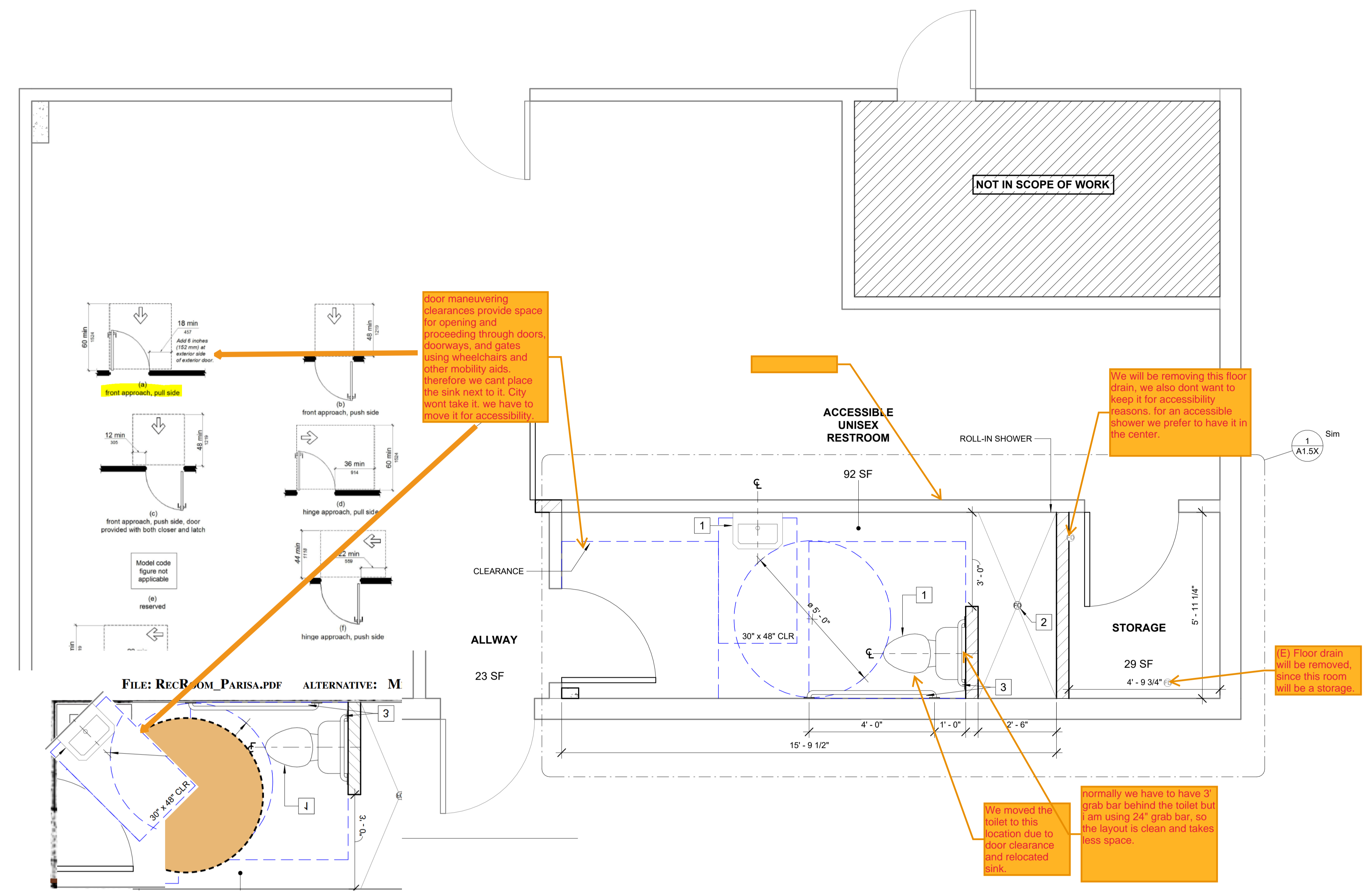
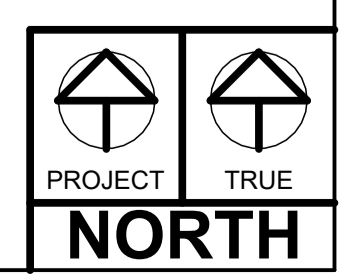
PROJECT:
MENLO COMMONS
2140 Santa Cruz Ave, Menlo Park, CA 94025

CONTRACTOR
**PRELIMINARY PLANS
NOT FOR CONSTRUCTION**
SHEET TITLE:
PROPOSED FLOOR PLAN

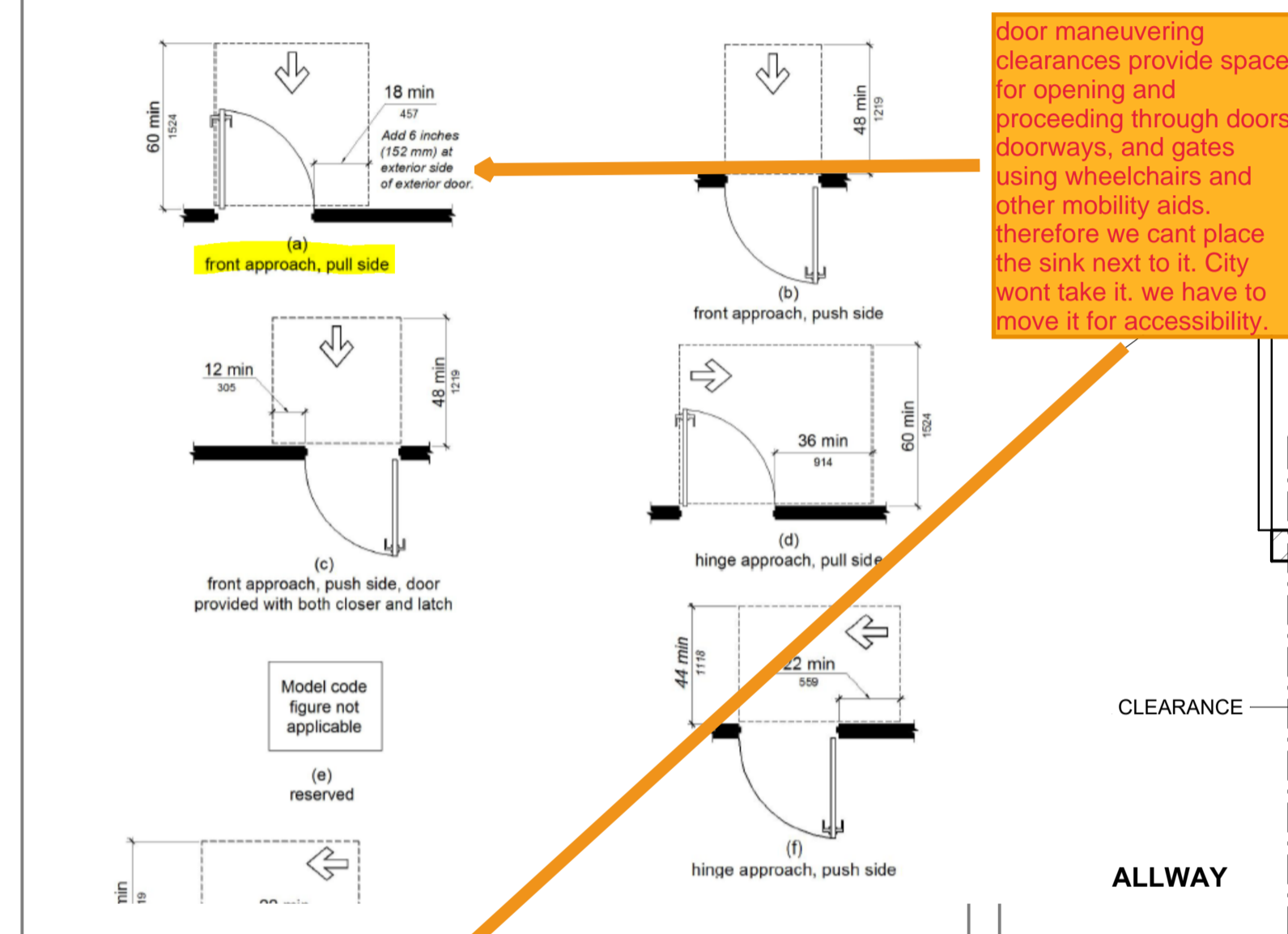
REVISIONS

No.	Description	Date

DRAWN: PA
CHECKED: JR
DATE: Issue Date
SCALE: As indicated
JOB No.: 22-5-09-MENLOCOMMONS
SHEET No.:



Existing restroom w/ shower. Walls and drains ● sh



door maneuvering clearances provide space for opening and proceeding through doors, doorways, and gates using wheelchairs and other mobility aids. therefore we cant place the sink next to it. City wont take it. we have to move it for accessibility.

We will be removing this floor drain, we also dont want to keep it for accessibility reasons, for an accessible shower we prefer to have it in the center.

(E) Floor drain will be removed, since this room will be a storage.

We moved the toilet to this location due to door clearance and relocated sink. normally we have to have 3' grab bar behind the toilet but i am using 24\" grab bar, so the layout is clean and takes less space.

we can also do this option, with this option we are removing the existing wall and building a new one. restroom can get smaller if we build a new wall. this is just a quick layout i put together for you to see.

