

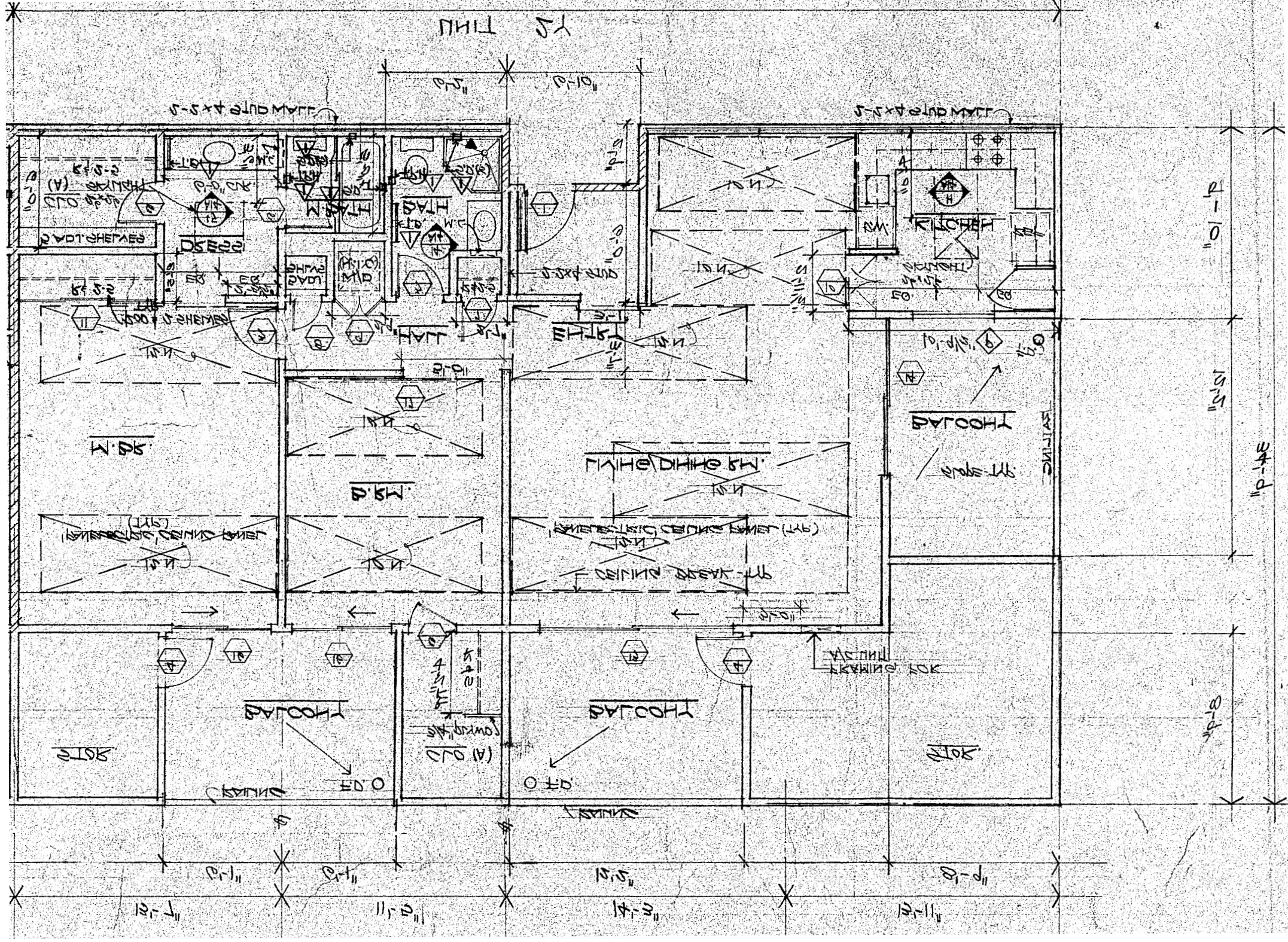
# Unit 2Y

Bldgs C, D,  
& E

*Images flipped vertical.*

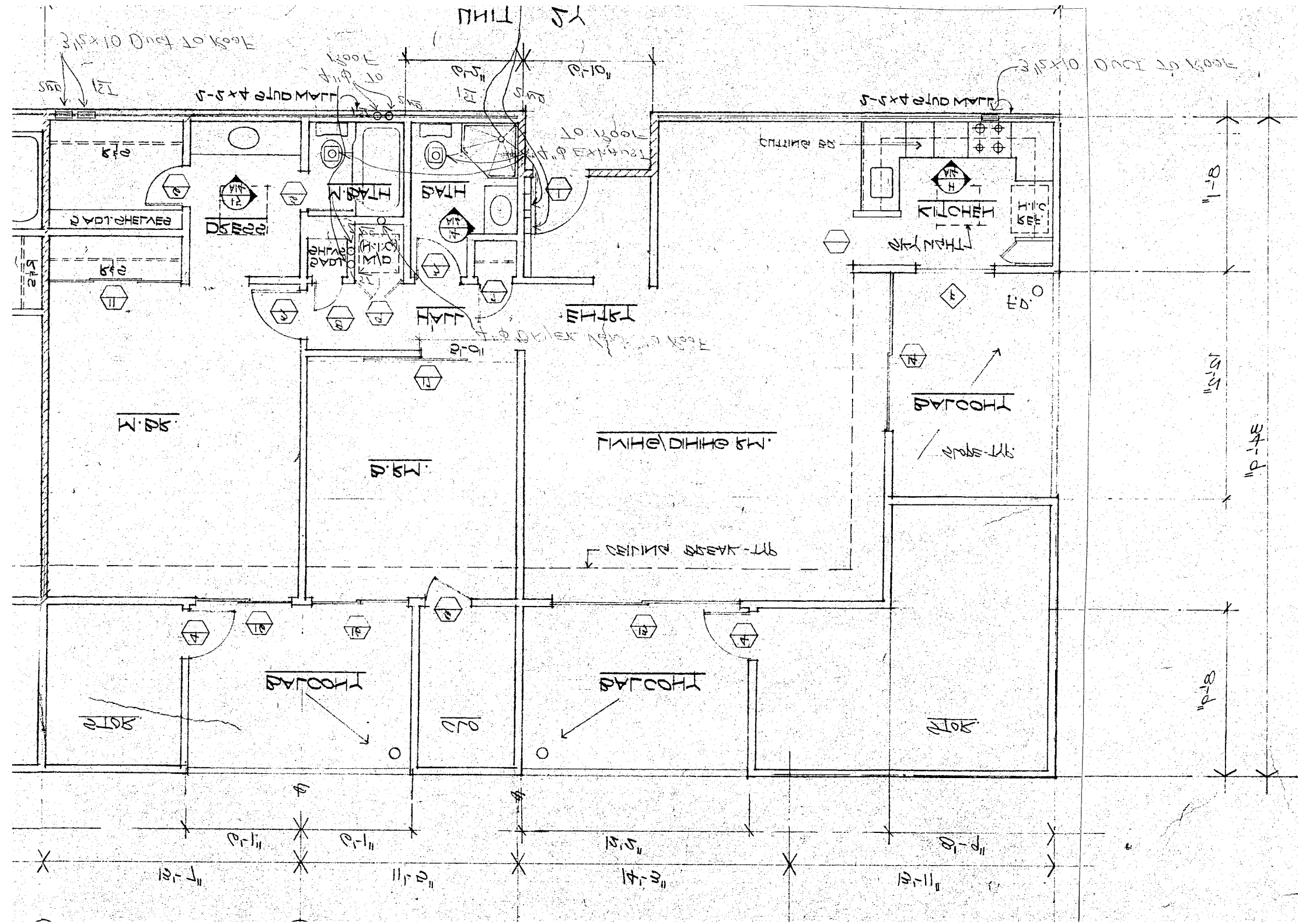
Building C-303, and C-307  
Building D-303, and D-305  
Building E-304, and E-307

Please note that the drawings are schematic and all dimensions listed should be verified. The drawings may or may not reflect the actual build. In addition, previous residents may have completed some remodeling improvements over the years that may have modified the plan layout of the home as presented.



Page 2 of 7  
**Unit 2Y**  
Bldgs C, D,  
& E

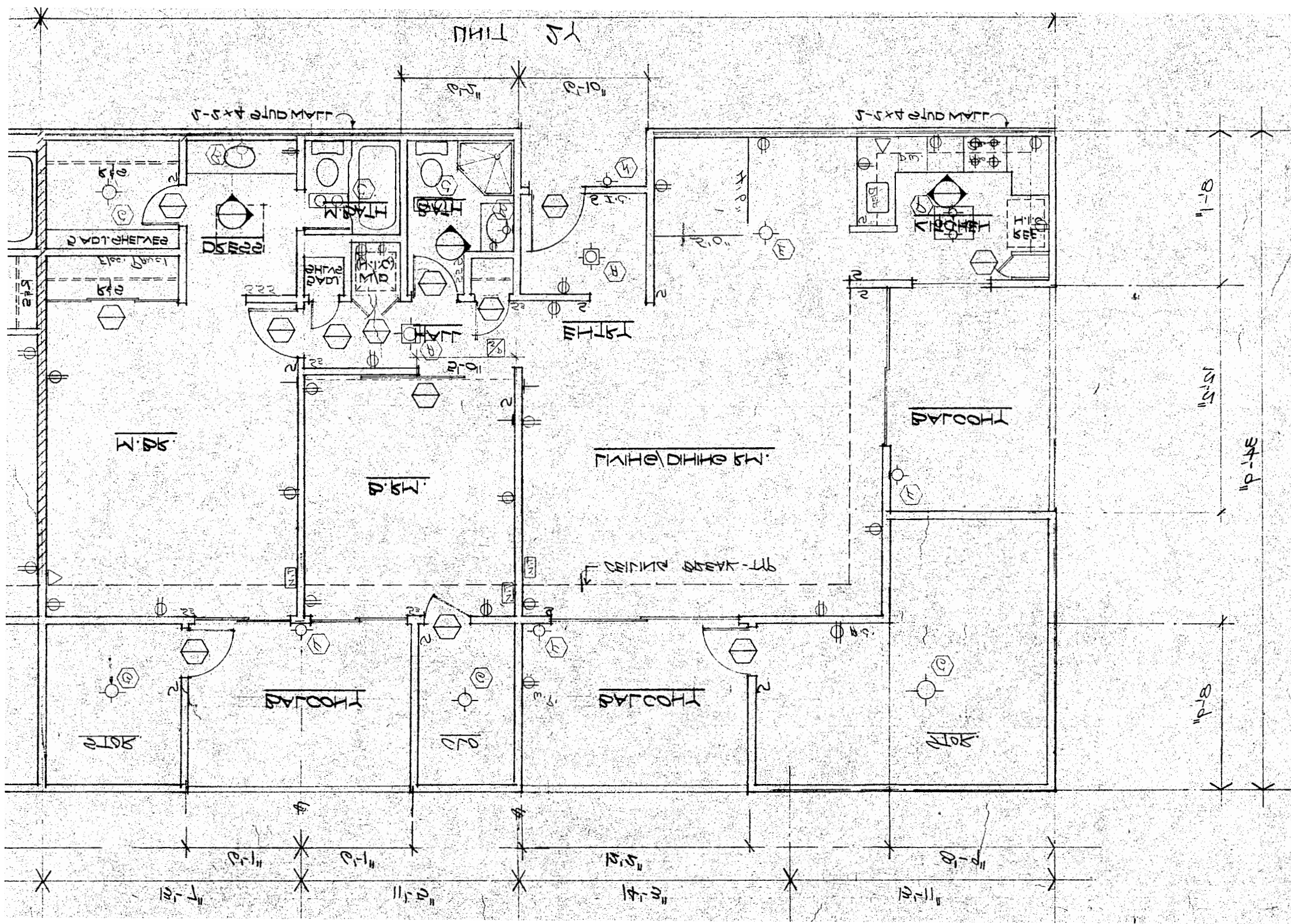
Building C-303, and C-307  
Building D-303, and D-305  
Building E-304, and E-307



# Unit 2Y

Bldgs C, D,  
& E

Building C-303, and C-307  
Building D-303, and D-305  
Building E-304, and E-307



# Unit 2Y Bldgs C, D, & E

Building C-303, and C-307  
Building D-303, and D-305  
Building E-304, and E-307

## **Notes regarding Unit 2Y, Phase II (Bldgs C and E)**

Please note that the drawings are schematic and all dimensions listed should be verified. The drawings may or may not reflect the actual build. In addition, previous residents may have completed some remodeling improvements over the years that may have modified the plan layout of the home as presented.

Per county records, the size of this condo is 1,220 square feet.

I have been asked whether closets and storage are included in this official square footage, so here is a very unofficial analysis of surface areas based on my interpretation of the drawing on page 1.

Here goes:

Looking at square feet, I see that the total length of the condo is 53 feet 2 inches (you add them up: 13'7" + 11'5" + 14'3" + 13'11"), or 638 inches. Width is 34 feet 9 inches, or 417 inches. That is 266,046 square inches, or (divide by 144) 1,847.54 Square feet. Deduct the entryway: 6'10" x 2'9\* = 2,706 sqin = 18.79 sqft. 1,847.54 – 18.79 = 1,828.75. Round off to 1,829.

Balcony and storage/closet dimension is 8 feet 9 inches = 105 inches both ways. Excluding balconies, storage, and most of the kitchen, we get a living area length 638 – 105 = 533 in. Width becomes 417 – 105 = 312 in. Thus the living area rectangle measures 533 in x 312 in = 166,296 sqin = 1,154.83 sqft. Deduct the entryway: 6'10" x 2'9\* = 2,706 sqin = 18.79 sqft. 1,154.83 – 18.79 = 1,136.04. Round off to 1,136. Kitchen sticks out into the balcony area by 9'10" x 8'9" or 118 x 105 inches = 12,390 sqin = 86.04 sqft. Round off to 86.

I get rectangular living area + kitchen: 1,136 + 86 = 1,222 sqft.

So it would appear that I get 2 sqft more than listed by county. Pretty close!

No reader of this analysis is allowed to trust me. Repeat my reading and calculations, please.

We can conclude that balconies, storage, and closet cover a total of 1,829 – 1,222 = 607 square feet. Three balconies occupy 36 feet 6 inches or 438 inches. 438 x 105 = 45,990 sqin = 319.37 sqft. They are open to the sky, so should not count in any case. Thus storage and closet amount to 607 – 319 = 299 sqft.

These 299 sqft of storage and closet are under roof, but the space is not tall enough to count as rooms, so they are not counted.

*Dag Forssell* December 2, 2019

Note: Drawings on pages 2 and 3 in this report feature a narrower kitchen.

The as-built dimension is most likely 9'10" in buildings C, D and E.

The 8'1" dimension represents earlier versions of this same drawing, a carry-over from the drawings for Phase I, Buildings A and B.

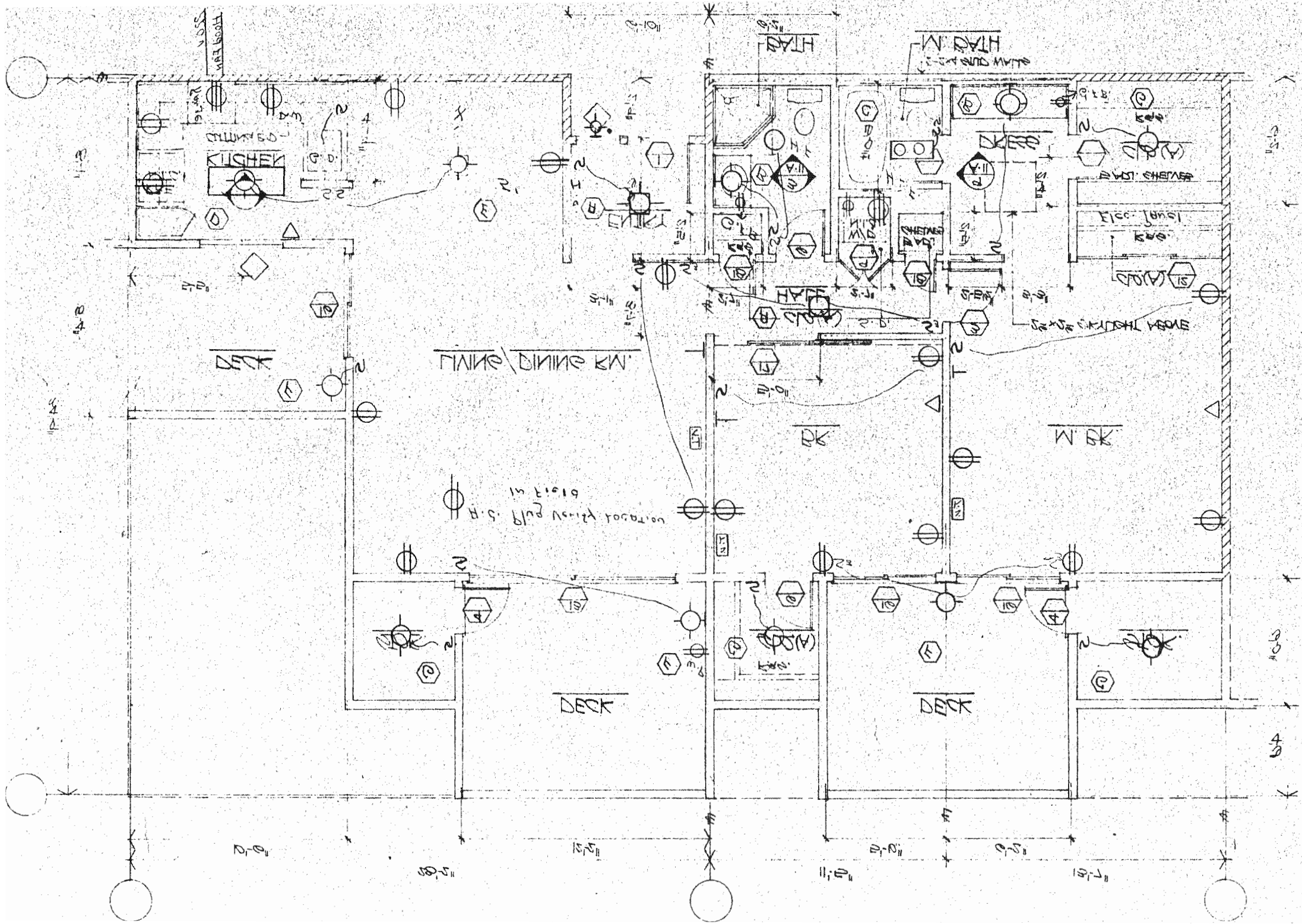
Prints of earlier versions do provide greater visual clarity (less clutter), and are included in the set of drawings for Phase II.

Dag



# Unit 2Y Bldgs A & B

Building A-301, and A-304  
Building B-301, and B-304



# Unit 2Y

Bldgs A & B

Building A-301, and A-304  
Building B-301, and B-304

Please note that the drawings are schematic and all dimensions listed should be verified. The drawings may or may not reflect the actual build. In addition, previous residents may have completed some remodeling improvements over the years that may have modified the plan layout of the home as presented.

